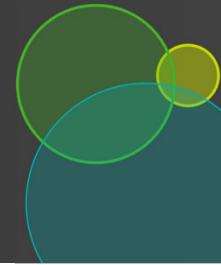


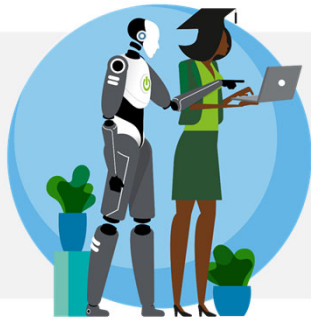
# The Future of Work Institute™

Preparing the next generations of the workforce to thrive



## THE FUTURE IS HUMAN

We are living in an **era of continuous change for both workers and employers**. The “shelf life” of most technical skills is less than three years and **human skills – curiosity, critical thinking, problem solving, logical reasoning, and others – are more important than ever before.**<sup>1</sup> In fact, 50% of tasks across all occupations are uniquely human, up from 30% in 2010, and projected to grow to 80% by 2030.<sup>2</sup> As **technology disrupts** and fundamentally changes the way we work; **human skills are an essential component** of how members of the workforce navigate the ongoing evolution of their work.



## ABOUT THE FUTURE OF WORK INSTITUTE

For lifelong learners at all stages of their careers, Deloitte’s Future of Work Institute™ offers an innovative suite of microcredential learning experiences that equip learners of all ages with human skills that are common across all careers, amplifies their resiliency and adaptive mindset in the face of constant change, and provides the framework and environment to envision and design a fulfilling, meaningful work life.

## OUR SUITE OF MICROCREDENTIALS

- PREPARE
- PERFORM
- PIVOT



**Career Readiness for Graduate and Undergraduate Students:** Designed for students to explore their preferences & employer expectations as they begin and evolve their career journeys.



**Career Readiness for Community College and Career/Technical Education Students:** Tailored to the unique experience of 2-year students to connect classroom learning to job opportunities.



**Higher Education Leaders of the Future:** Tailored upskilling for higher education people leaders based on the changing campus workplace experience.



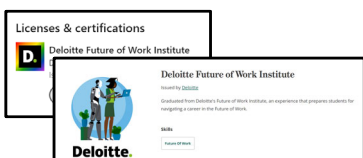
**Leadership in the New World of Work:** Designed to support onboarding, transitioning teams, and advancing leaders within complex organizations.



**Career Pathway Academy:** Guided learning to help transform careers and empower individuals to support a future-proof workplace in high-demand industries.

*Microcredential content & experiences can be tailored to meet your organization’s needs and key learning outcomes.*

Upon successful completion of our programs, participants receive a stackable, verifiable badge from **Credly by Pearson**, the world’s largest and most-connected digital credential network.



## THE IMPACT

**950+ participants**

to date are part of our growing alumni network.\*\*

**20+ organizations**

count themselves as FOWI partners.\*\*

**100%**

of participants felt the program was useful to their future career.\*

**33% increase**

in participants’ overall understanding of their work, the workforce, and the workplace, their own preferences, and their ability to apply these concepts to their current and future roles.\*

**26% increase**

in participants’ confidence level towards highlighting key skills, knowledge, and experience in an elevator pitch.\*

\*Based on Fall 2022 data

\*\*Cumulative program participants and partners through Spring 2023

# The Future of Work Institute™

## CURRICULUM OVERVIEW

### CAREER READINESS FOR STUDENTS

The signature **Future of Work Institute™ for Career Readiness** experience is designed to **support undergraduate and graduate student participants' career readiness** as they prepare to join a **continuously evolving workforce and world of work**. The curriculum includes core curriculum **centered around the basic elements of the Future of Work** and supplemental activities that provide real-time application of core content.

#### Core Lab Modules (3 hours each)

Work | Workforce | Workplace

#### Supplemental Modules (1 hour each)

Cloud Technology | Chatbot Fundamentals | Inclusive Leadership | Cybersecurity | Virtual Reality/Omniverse | Networking Workshop | Telling Your Story | Climate & Sustainability | Building Your Board of Directors

#### Skills Catalyst Assessment

#### Graduation Ceremony (1 hour)

### HIGHER EDUCATION LEADERS OF THE FUTURE

The **Future of Work Institute™ for Leadership Development** experience guides employees through a core curriculum **focused on human skills** and how the **changing nature of their work, their workforce, and the workplace impacts them and their teams**, and supplemental modules that complement core learning. The curriculum is **grounded in life design principles** and accounts for the breadth and nuances of employees' roles and responsibilities.

#### Core Lab Modules (3 hours each)

Work | Workforce | Workplace

#### Supplemental Modules (1-2 hours each)

Effective Coaching | Strategic Planning & Design | Managing Hybrid Teams | Telling Your Story | Digital Acumen | Building Your Board of Directors | Data-Driven Decision Making

#### Skills Catalyst Assessment

## SPOTLIGHT: CORE LAB CONTENT

**WORK:** *How is the world of work changing? How does this new world of work align to your unique preferences, skills, and life design? How might this change over time?*

**WORKFORCE:** *What is it like to join today's complex workforce? What does it mean to be a team player and a leader? What are your personal commitments to inclusion and equity?*

**WORKPLACE:** *How are employers envisioning the future of the workplace, and how does this align with your preferences around well-being and work-life fit? How can you prepare for meaningful connections in any environment?*

“The Institute **equipped me with the skills to leverage my strengths** in communication, collaboration, and curiosity for my **marketing career**, while also **preparing me to navigate the dynamic technological landscape** that defines our world of work.”

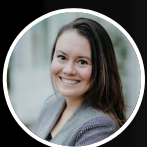
~Spring 2023 participant

## BRINGING THE FUTURE OF WORK INSTITUTE™ EXPERIENCE TO YOUR ORGANIZATION

Our team is ready to help you plan to bring the program to your organization's learners. As part of delivery, we'll:

- Partner with your organization to tailor the curriculum for an ideal learning experience
- Support program outreach, advertising, participant selection/registration, and manage delivery logistics
- Provide a comprehensive package of resources – from communications and publicity materials to data outcomes and participant impact reports

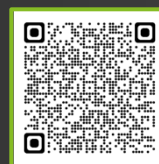
## LET'S TALK!



**Nicole Overlay**  
Program Founder  
noverley@deloitte.com



**Clark Edwards**  
Program Manager  
claedwards@deloitte.com



Visit our website for  
more information



Read our feature in  
Fast Company