

# Indefinite Quantity Construction Contract (JOC) 99999-SPD-S20160216

*Issuing Officer: Ezeomo Akhirome*

*Date: May 24, 2016*

# Your Presenter

*State Purchasing Division – Statewide Contracts*



**Ezeomo Akhirome**

*Associate Category Manager*

## Education

*Kennesaw State University – MPA*

*Georgia State University - BA*

## Contact Information

[Ezeomo.Akhirome@doas.ga.gov](mailto:Ezeomo.Akhirome@doas.ga.gov)

404-656-0931

# Purpose of this Webinar

*State Purchasing Division – Statewide Contracts*



## **Purpose:**

The purpose is to introduce State entities and local governments to a new statewide contract which provides Job Order Contracting and related products and services throughout the State of GA.

# Statewide Contract Details

*State Purchasing Division – Statewide Contracts*



What is the Contract Number?	99999-SPD-S20160216
Is it a Renewal?	No
Does it Replace an Existing Contract?	Yes
What is the Contract Term?	1 Years with 4 Options for Annual Renewal
What is the Expiration Date?	July 20, 2020
Does it Allow the Use of the P-Card?	Yes
Who is the Person to Contact with Questions:	Ezeomo Akhirome 404-656-0931 Ezeomo.Akhirome@doas.ga.gov

# Transition Process



- **Old Contract: SWC 90818 will expire August 31, 2016. However, the Contract will be put in “Open” status on August 26, 2016.**
- **The LAST day to receive a Work Order on SWC 90818 is July 23, 2016.**
- **Any Work Orders created after that date will have to be done on the new contract 99999-SPD-S20160216.**
- **Please keep these dates in mind as they are hard set in the system.**

## What Is It?

- **Job Order Contracting (JOC)** - is a way for organizations to get numerous, commonly encountered construction projects done quickly and easily through multi-year contracts. JOC reduces unnecessary levels of engineering, design, and contract procurement time along with construction project procurement costs by awarding long-term contracts for a wide variety of renovation, repair and construction projects.



# Who Can Use It

- JOC is in use daily by hundreds of major public agencies for a wide variety of repair, alteration, and new construction work.
  - Federal Departments including the United States Postal Service
  - State Government
  - Cities & Counties
  - K-12 School Districts
  - Universities
  - Transportation Agencies
  - Airports
  - Mass Transit Authorities
  - Water/Wastewater Management Agencies
  - Housing Authorities

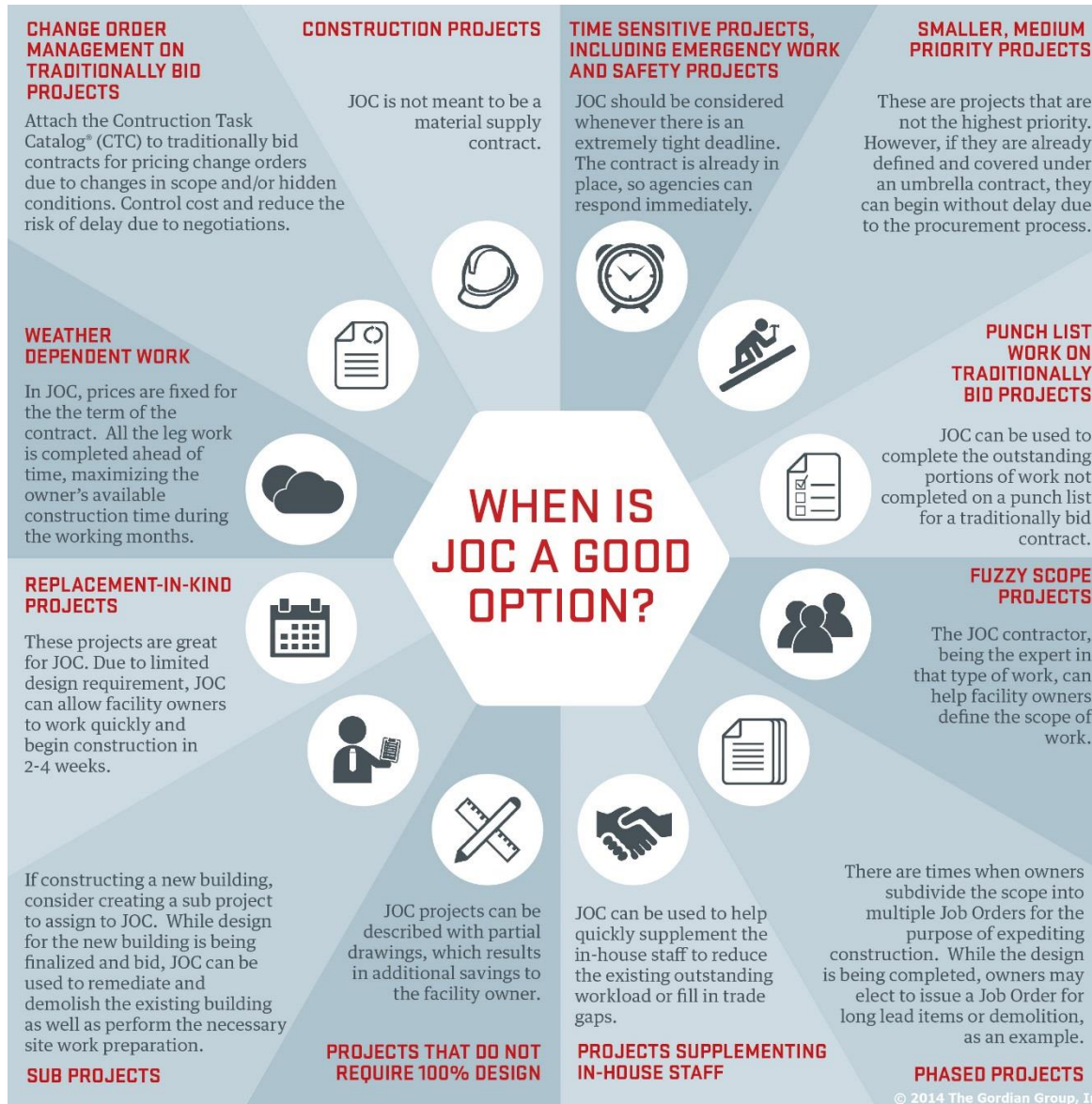


# Why Should I Use JOC?

- Job Order Contracting (JOC) Provides:
  - A Means to Accomplish a Large Number of Individual Projects with a Single, Competitively Bid Contract.
  - On-call Contractors Ready to Perform a Series of Projects for Competitively Bid Unit Prices.
- Typical Mission for Job Order Contracting:
  - Small to Medium Sized Straightforward, Standalone Construction Projects; Replacement in Kind; and Renovation and Demolition Projects.
  - Projects that are: A) Seasonal; B) Time Sensitive; C) Subject to Worsening Conditions/Safety Issues; D) Subject to Propensity for Change Orders.
- Larger Pool of Suppliers



# When Should I Use JOC?



© 2014 The Gordian Group, Inc

# Details About The Indefinite Quantity Construction State Wide Contract



- The State of Georgia Department of Administrative Services (DOAS) signed a Participation Agreement with National Joint Powers Alliance (NJPA) to use their JOC contract.
- NJPA is a public corporation or agency serving as a municipal contracting agency for government and education agencies. NJPA serves member agencies under the legislative authority established and granted by Minnesota Statute 123A.21.
- DOAS has negotiated terms and conditions to be included in the contract to meet laws, rules, and policies set forth by the Georgia Legislature.



# Who Are The Suppliers?

- **Astra Construction Services, LLC**
- **Centennial Contractors Enterprises Inc**
- **Engineering Design Technologies, Inc.**
- **F.H. Paschen, S.N Nielsen & Associates, LLC**
- **Greene & Burdette Property Mgmt LLC**
- **HCR Construction**
- **HITT Contracting, Inc.**
- **JJ Morley**
- **Johnson-Laux, LLC**
- **Kellogg Brown & Root**
- **LESCO Restorations, Inc.**
- **Osprey Management LLC**
- **Prime Contractors, Inc**
- **Red Cloud Services, LLC**
- **Rubio and Son Interiors, Inc.**

# What Regions or Zones Do These Suppliers Cover?



ZONE	A	B	C	D
Astra Construction Services, LLC	■	□	□	□
Brown & Root	■	■	■	■
Centennial Contractors Enterprises, Inc.	■	■	■	■
Engineering Design Technologies, Inc.	■	□		□
F.H. Paschen, S.N Nielsen & Associates, LLC	■	■	■	■
Greene & Burdette Property Mgmt., LLC	□	■	□	□
HCR Construction	■			
HITT Contracting, Inc.	■	□	□	■
J.J. Morley Enterprises	□	□	■	□
Johnson-Laux Construction, LLC	■	□	□	□
LESCO Restorations, Inc.	■	■	■	■
Osprey Management, LLC	■	□	□	□
Prime Contractors, Inc.	■	□	□	□
Red Cloud Services, LLC	■	□	□	□
Rubio and Son Interiors, Inc.	□	■		

■ AWARDED

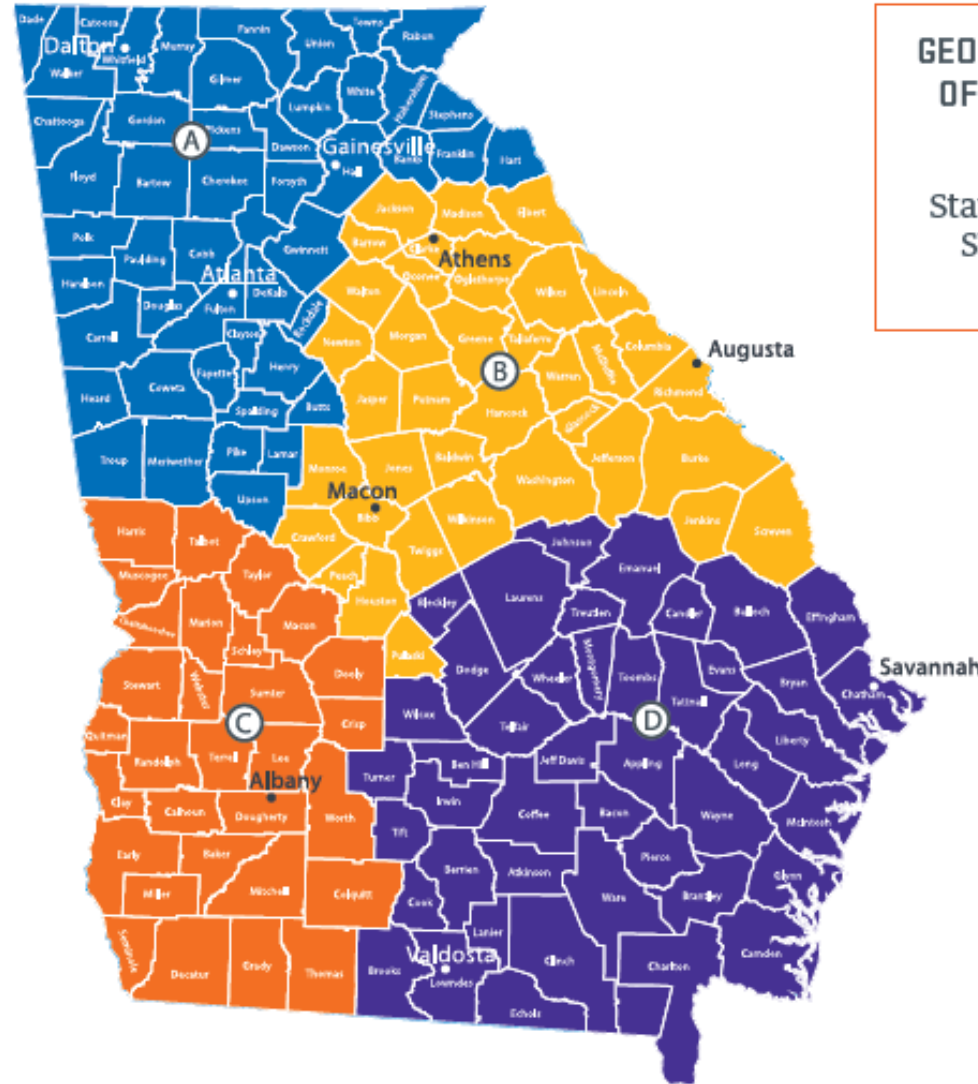
□ AUTHORIZED TO WORK

# Who Is The GORDIAN GROUP®?



- **The Gordian Group® is the third party administrator that assists Authorized Users in choosing a General Contractor, Building a Scope, Architecture and/or Design, and General Administration of the process.**

# CONTRACTOR SERVICE AREAS



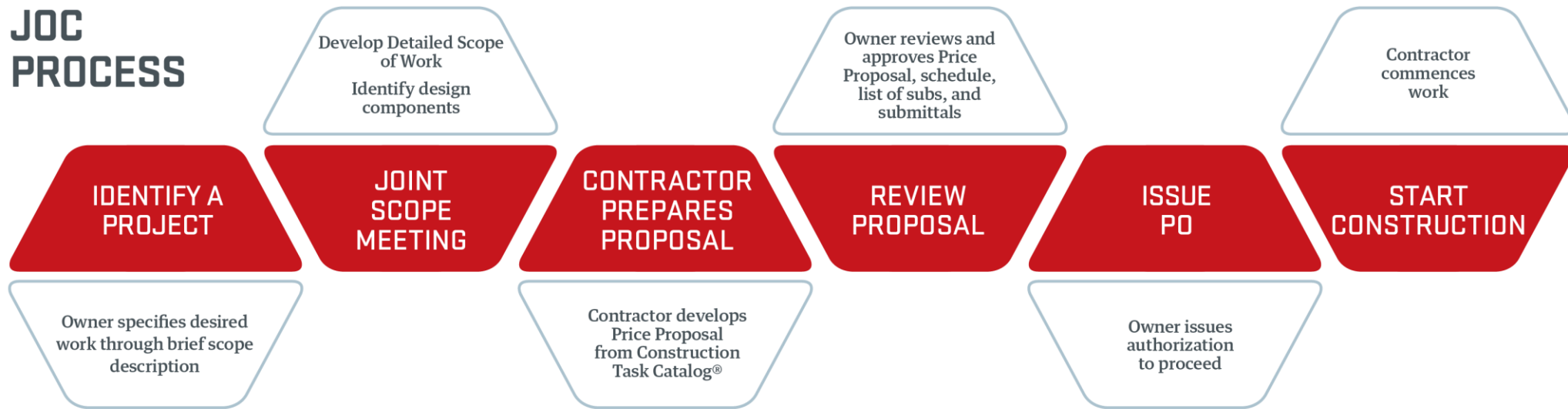
**GEORGIA DEPARTMENT  
OF ADMINISTRATIVE  
SERVICES**

Statewide Contract#:  
**SWC 99999-SPD-  
S20160216**

# Indefinite Quantity Construction Process



## JOC PROCESS





# Who Is Involved In The Process?

- **Authorized User**
- **Architect – Engineer**
- **Awarded Contractor**
- **The Gordian Group**
- **NJPA**
- **DOAS**



# How Is Cost Calculated?



- **Contractor is Paid for all Work According to the Following Formula:**

UNIT PRICE	X	QUANTITY	X	ADJUSTMENT FACTOR	=	TOTAL FOR TASK
UNIT PRICE	X	QUANTITY	X	ADJUSTMENT FACTOR	=	TOTAL FOR TASK
UNIT PRICE	X	QUANTITY	X	ADJUSTMENT FACTOR	=	TOTAL FOR TASK
						<hr/>
						TOTAL JOB ORDER PRICE



# What Is The Construction Task Catalog®?

- **The Construction Task Catalog® is a catalog that contains a break out of line items that includes:**
- **260,000+ tasks,**
- **180+ labor categories**
- **2,900+ equipment types**
- **240,000+ material items**
- **The costs are derived from the local Atlanta area**

# Construction Task Catalog®



Exterior Improvements	32	32
Bases, Ballasts, And Paving	32 10	
Unit Paving	32 14	

MINOR CSI	UOM	DESCRIPTION	TOTAL DIRECT UNIT COST	DEMOLITION UNIT COST
<b>32 16</b>		<b>Curbs, Gutters, Sidewalks, And Driveways</b> <small>(32 16)</small>		
<b>32 16 13</b>		<b>Curbs And Gutters</b> <small>(32 16)</small> Note: Includes transition. Demolition Includes two saw cuts (each end) of curbs and gutters for lengths up to 100'. See CSI section 02 41 19 13-0043 for additional saw cuts within the 100'.		
<b>32 16 13 13</b>		<b>Cast-In-Place Concrete Curbs And Gutters</b> <small>(32 16 13)</small> Note: Includes concrete, forms, rebar, chairs (where necessary), expansion joints.		
<b>32 16 13 13-0001</b>		<b>Concrete Curb, Cast In Place</b> <small>(32 16 13 13)</small> Note: Includes delivered concrete, forms, rebar, chairs (where necessary), expansion joints, finish and curing.		
32 16 13 13-0002	LF	6" X 12" Cast In Place Concrete Curb ..... 7.18	7.18	3.23
		For Up To 20, Add 4.03		
		For >20 To 50, Add 2.27		
		For >50 To 100, Add 0.88		
		For >500 To 1,000, Deduct -0.88		
		For >1,000, Deduct -1.50		
32 16 13 13-0003	LF	6" X 12" Cast In Place Concrete Curb - Radius ..... 8.18	8.18	3.72
		For Up To 20, Add 4.63		
		For >20 To 50, Add 2.61		
		For >50 To 100, Add 1.01		
		For >500 To 1,000, Deduct -1.01		
		For >1,000, Deduct -1.72		

CSI MASTERFORMAT

FULL DESCRIPTION OF TASK

PRICE INCLUDES LABOR, MATERIAL + EQUIPEMENT FOR YOUR LOCATION

DEMOLITION PRICE

SECTION + TASK NOTES

MODIFIERS FOR VARIATIONS OR QUANTITY DISCOUNTS

260,000+ tasks  
180+ labor categories  
2,900+ equipment types  
240,000+ material items

- Actual, local costs
- Customized technical specifications for each task

# Questions...



**Thank You!**



**Georgia**